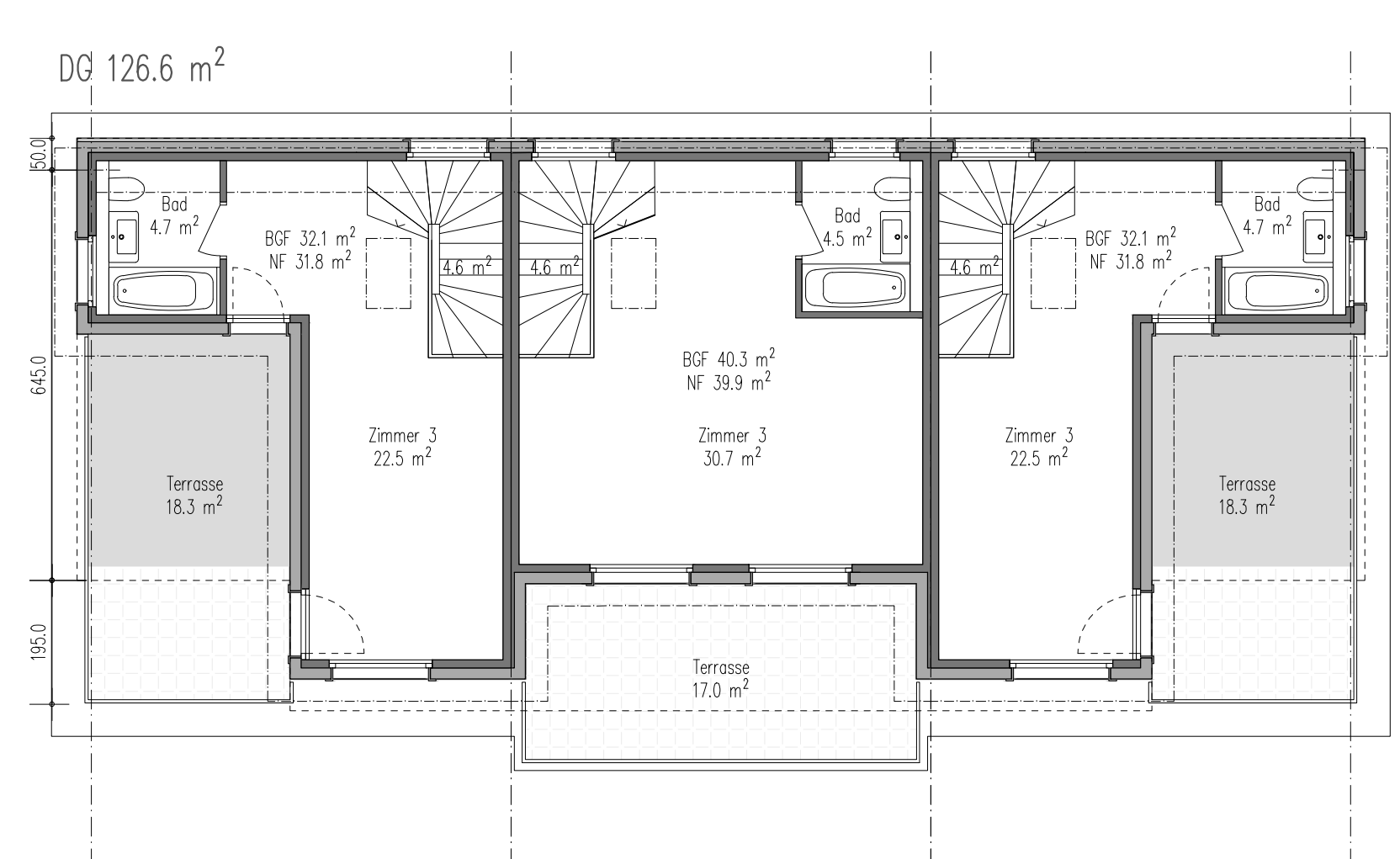
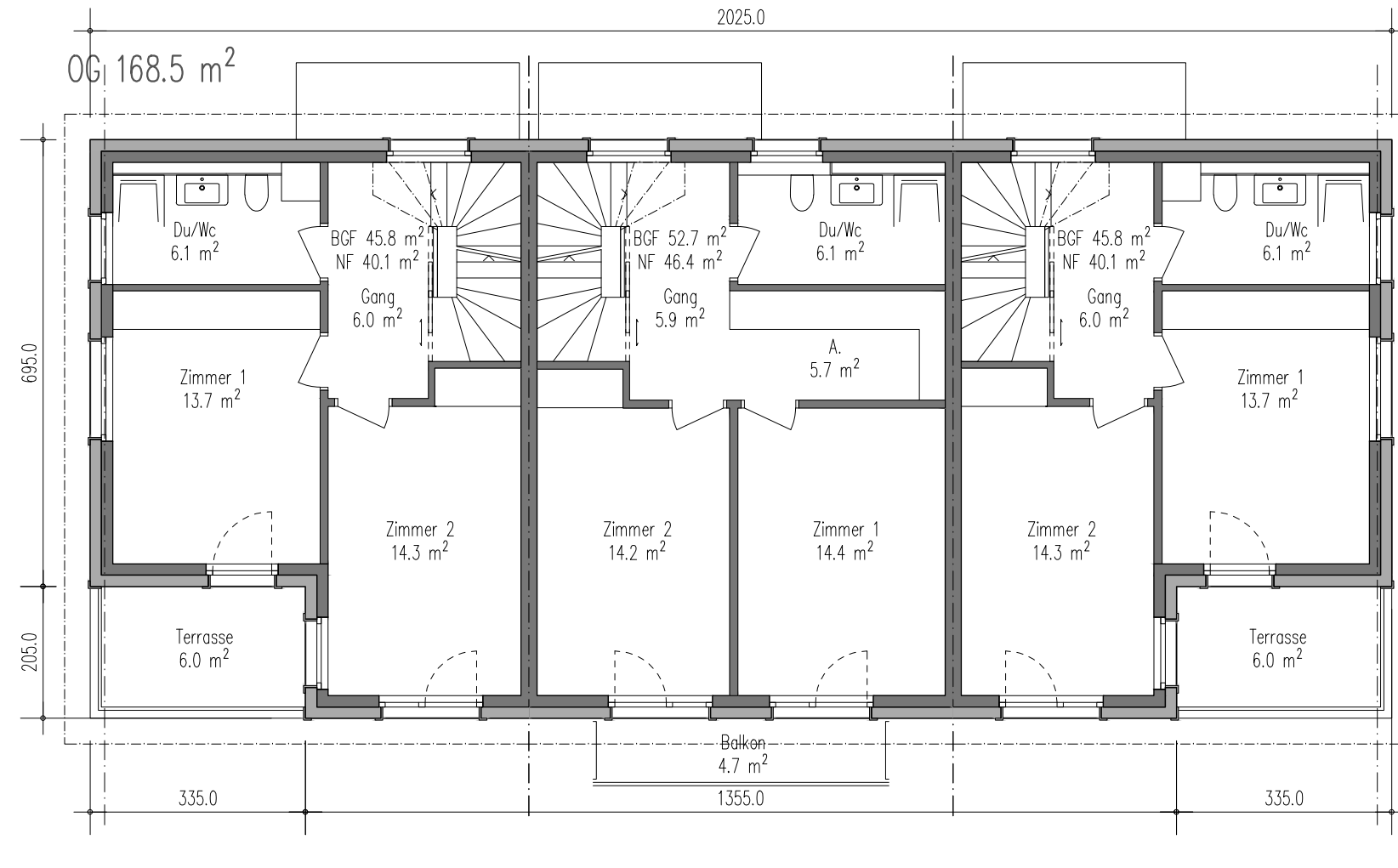
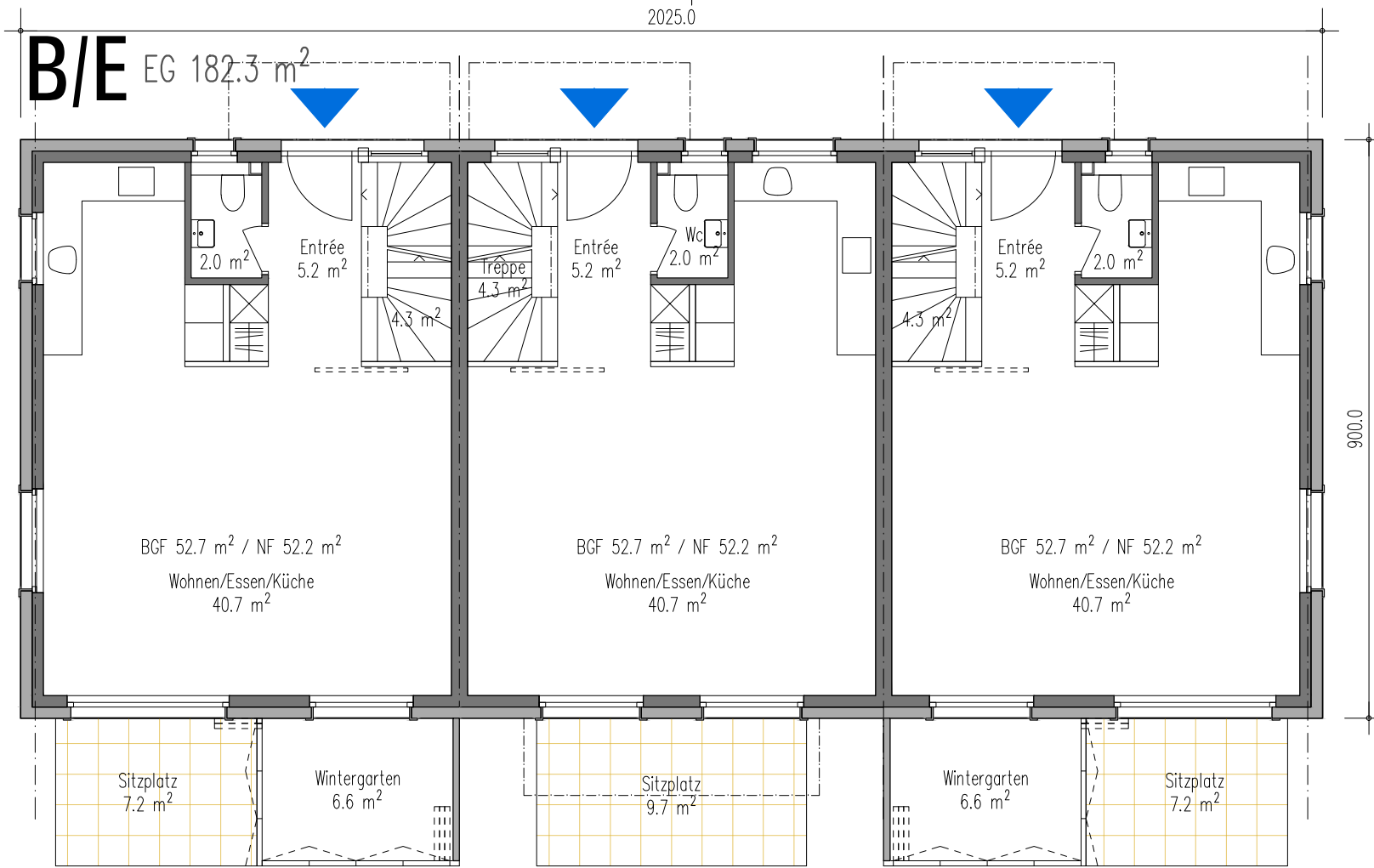
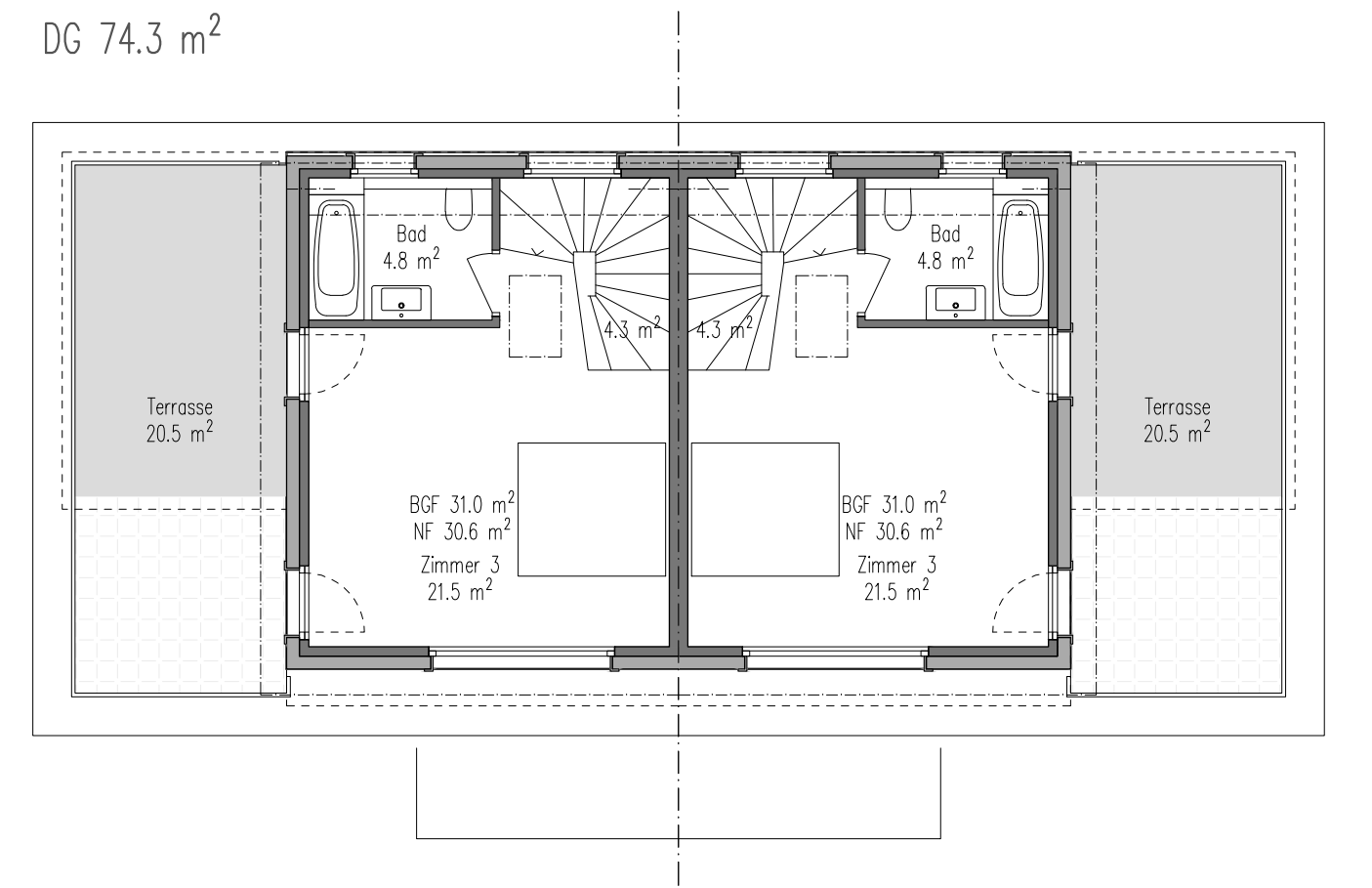
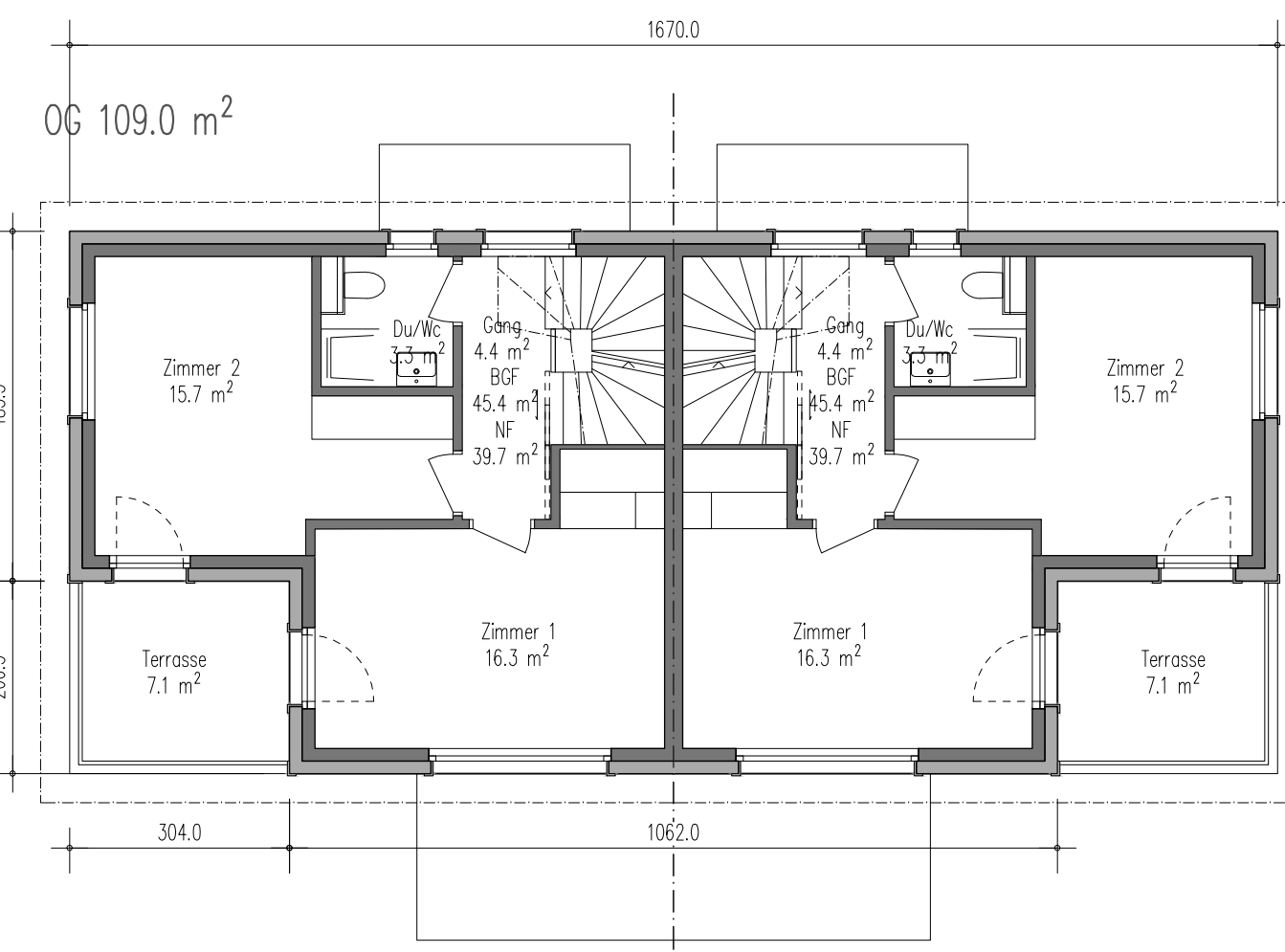
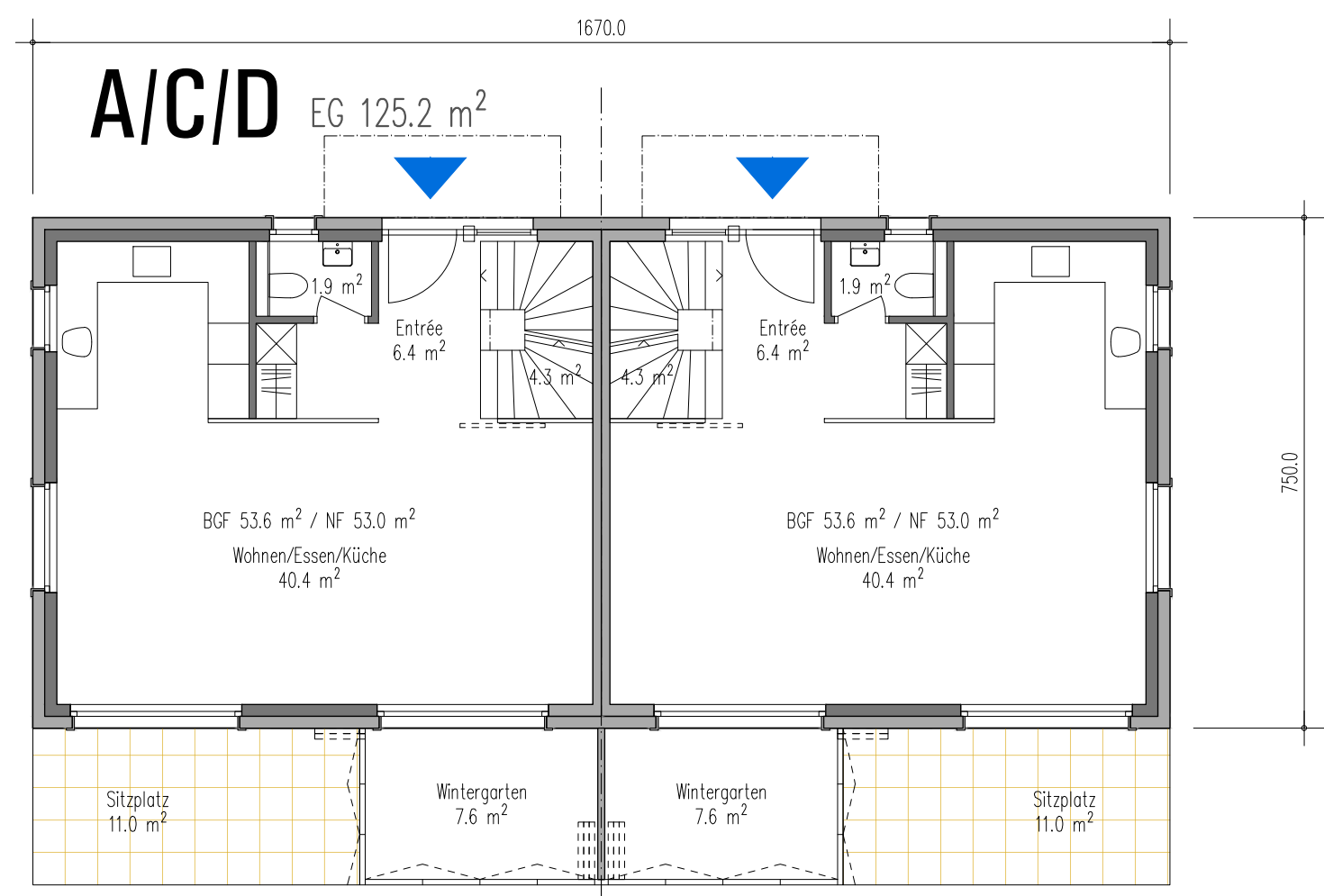


Nutzfläche [m ²]					
Häuser	Geschoss	1	2		Total
A/C/D	EG	53	53	x	106
	1.OG	39.7	39.7	x	79.4
	DG	30.6	30.6	x	61.2
Total		123	123		740
Häuser	Geschoss	1	2	3	Total
B/E	EG	52.2	52.2	x	156.6
	1.OG	40.1	46.4	x	126.6
	DG	31.8	39.9	x	103.5
Total		124	139	124	773
Total A-E					1'513
Nr. 9	EG	103.5	89.2		193
	1.OG	103.5	89.2		193
	DG	81.0	69.4		150
Total		288	248		536
Nr. 11	EG	103.8	89.2		193
	1.OG	103.8	89.2		193
	DG	85.2	70.1		155.3
Total		293	249		541
Total A-E + 9/11					2'590



A/C/D



B/E



Parkplatzberechnung					
Häuser A/C/D	2	x	3	=	6
Häuser B/E	3	x	2	=	6
Häuser 9/11	6	x	2	=	12
Total					24 PP
Besucher 1 PP / 5 WHG					5 BPP
Moto 1 PP / 10 PP					2 MPP
Velo PP					
Häuser A/C/D	6	x	3	=	18
Häuser B/E	6	x	3	=	18
Häuser 9/11	12	x	3	=	36
Total					72 Velo PP

- ALLE FENSTERFLÄCHEN ≥ 1/10 BODENFLÄCHE
- ALLE TÜRE ≥ 80 CM I.L.
- ALLE GEBÄUDEINGANGSTÜRE ≥ 100 CM I.L.
- WOHNUMGANGS-, BALKON- UND TERRASSEN-TÜRSCHWELLEN: HOHE MAX. 25 MM

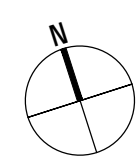
A/C/D



B/E



Grundeigentümer / Bauherrschafft: Hochbord Immobilien AG, Neutalstrasse 13c, 8852 Altendorf
 Architekten: Wachtl + Partner, Belsitostrasse 6, 8044 Zürich t 044 383 22 63, info@wachtl.ch
 Wohnüberbauung Geenstrasse 1-11
 Parzelle Kat.Nr. 13402 (vormals 11091, 11415) 8330 Pfäffikon



Grundrisse / Fassaden 1:100 1266-100-103

File: GN-240410.1.dwg Plot: 19.04.2024 - 10:43 Format: A1q
 Datum: 21.3.2024 Revision: