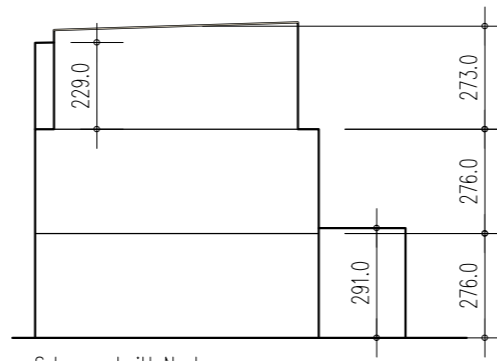
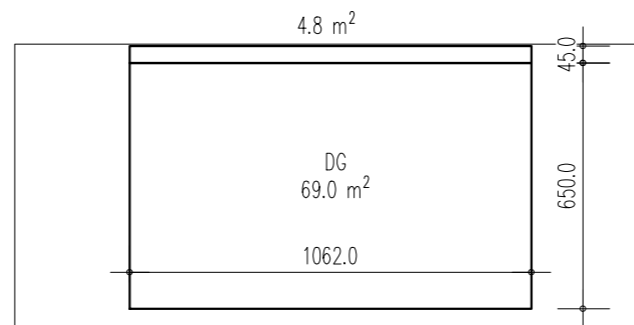


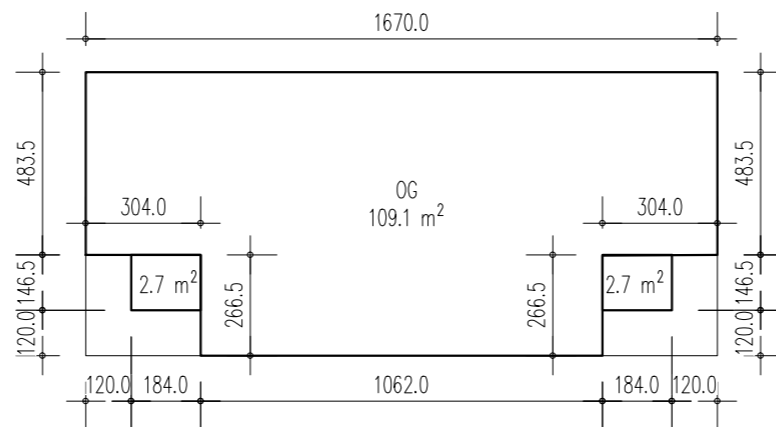
Baumasse									
Haus A									
	Ausgem.	EG	Diff.						
Gew.Terr.	570.48								
	569.41	569.74	569.51	-0.23					
	569.49								
	569.57								
	[m2]		[m]						[m3]
EG	125.2	x	2.53						= 317
OG	114.5	x	2.76						= 316
DG	69.0	x	2.73						= 188
	4.8	x	2.29						= 11
<b>Total</b>									<b>832</b>
Haus B									
	Ausgem.	EG	Diff.						
Gew.Terr.	569.82								
	570.37	569.91	569.71	-0.20					
	569.76								
	569.68								
	[m2]		[m]						[m3]
EG	182.3	x	2.56						= 467
OG	172.1	x	2.76						= 475
DG	116.4	x	2.73						= 318
	9.1	x	2.29						= 21
<b>Total</b>									<b>1'281</b>
Haus C									
	Ausgem.	EG	Diff.						
Gew.Terr.	569.22								
	569.23	569.23	569.20	-0.02					
	569.25								
	569.2								
	[m2]		[m]						[m3]
EG	125.2	x	2.74						= 342
OG	114.5	x	2.76						= 316
DG	69.0	x	2.73						= 188
	4.8	x	2.29						= 11
<b>Total</b>									<b>858</b>
Haus D									
	Ausgem.	EG	Diff.						
Gew.Terr.	569.56								
	569.42	569.45	569.10	-0.35					
	569.32								
	569.50								
	[m2]		[m]						[m3]
EG	125.2	x	2.41						= 302
OG	114.5	x	2.76						= 316
DG	69.0	x	2.73						= 188
	4.8	x	2.29						= 11
<b>Total</b>									<b>817</b>
Haus E									
	Ausgem.	EG	Diff.						
Gew.Terr.	568.67								
	569.52	569.07	569.00	-0.07					
	569.58								
	568.49								
	[m2]		[m]						[m3]
EG	182.3	x	2.69						= 491
OG	172.1	x	2.76						= 475
DG	116.4	x	2.73						= 318
	9.1	x	2.29						= 21
<b>Total</b>									<b>1'305</b>
<b>Total A-E</b>									<b>5'093</b>
Reserve									2
Wintergärten									
	[m2]	[m]							[m3]
Häuser A/C/D	16.33	x	2.76	x	3				= 135
Häuser B/E	14.26	x	2.76	x	2				= 79
<b>Total</b>									<b>214</b>
Reserve									13



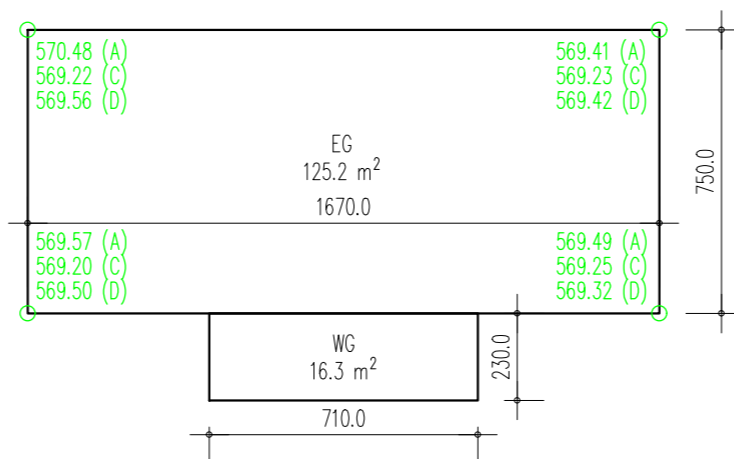
Schemaschnitt Neubau



Grundriss DG Häuser A/C/D



Grundriss OG Häuser A/C/D



Grundriss EG Häuser A/C/D

Grundeigentümer / Bauherrschaft: Hochbord Immobilien AG, Neutalstrasse 13c, 8852 Altendorf  
 Architekten: Wachtl + Partner, Belsitostrasse 6, 8044 Zürich t 044 383 22 63, info@wachtl.ch  
**Wohnüberbauung Geenstrasse 1-11**  
 Parzelle Kat.Nr. 13402 (vormals 11091, 11415) 8330 Pfäffikon



**BMZ - Neubau**

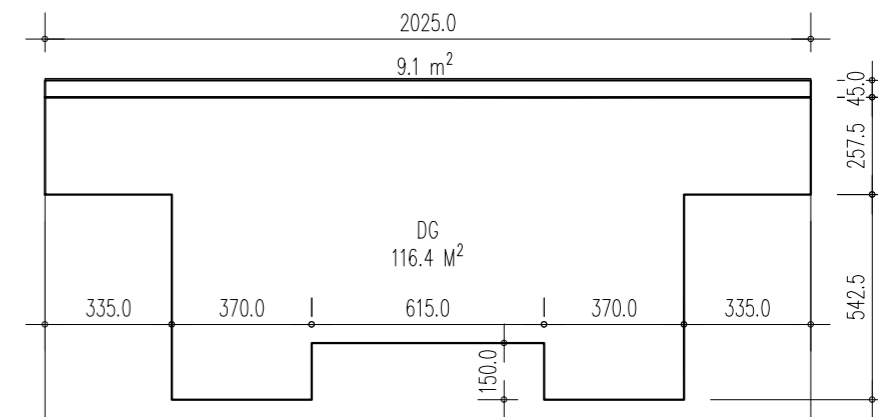
**1:200**

**1266-200-201.1**

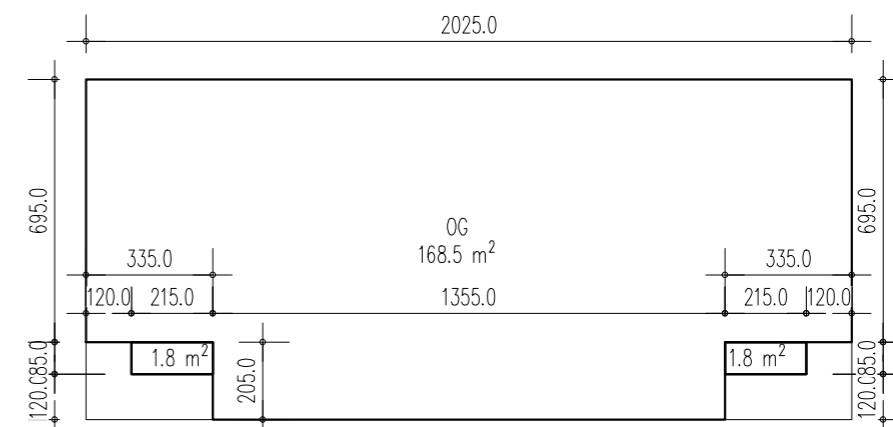
File: GN-240410.dwg  
 Datum: 21.3.2024

Plot: 19.04.2024 - 10:02  
 Revision:

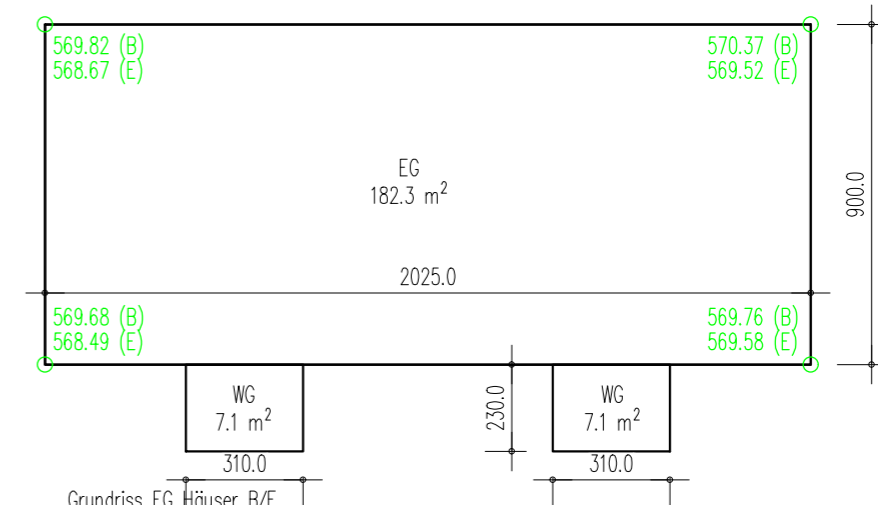
Format: A3q



Grundriss DG Häuser B/E



Grundriss OG Häuser B/E



Grundriss EG Häuser B/E