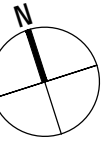


Grundeigentümer / Bauherrschaft: Hochbord Immobilien AG, Neutalstrasse 13c, 8852 Altendorf

Architekten: Wachtl + Partner, Belsitostrasse 6, 8044 Zürich t 044 383 22 63, info@wachtl.ch

Wohnüberbauung Geenstrasse 1-11

Parzelle Kat.Nr. 13402 (vormals 11091, 11415) 8330 Pfäffikon



Abgrabungen Haus A

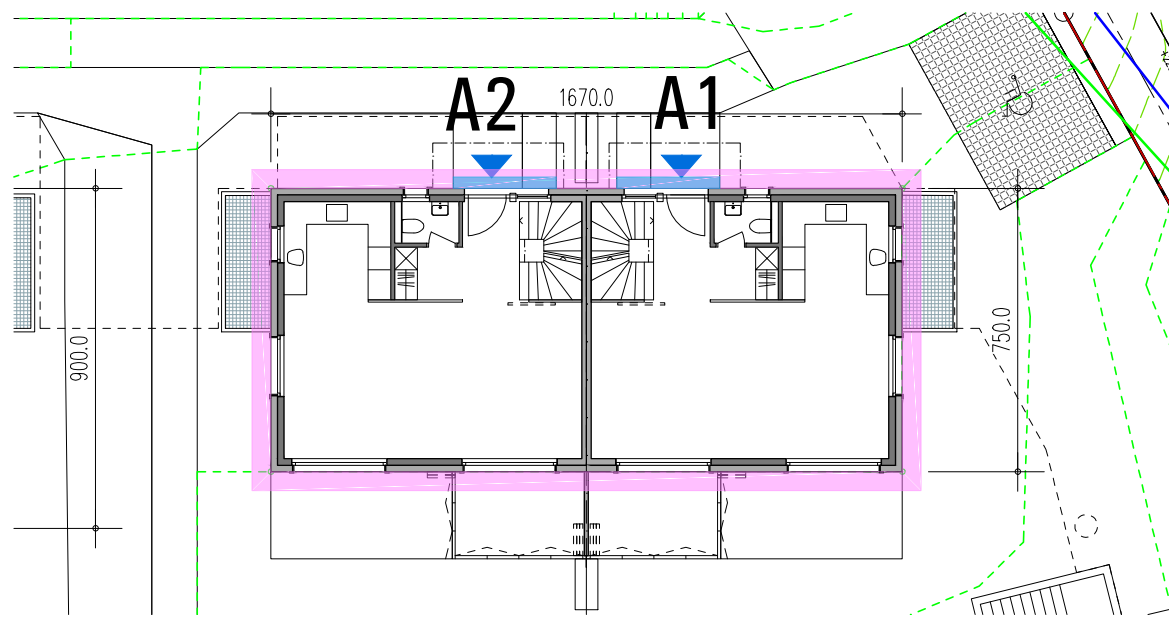
File: GN-240410.1.dwg
Datum: 21.3.2024

Plot: 17.04.2024 - 21:04
Revision:

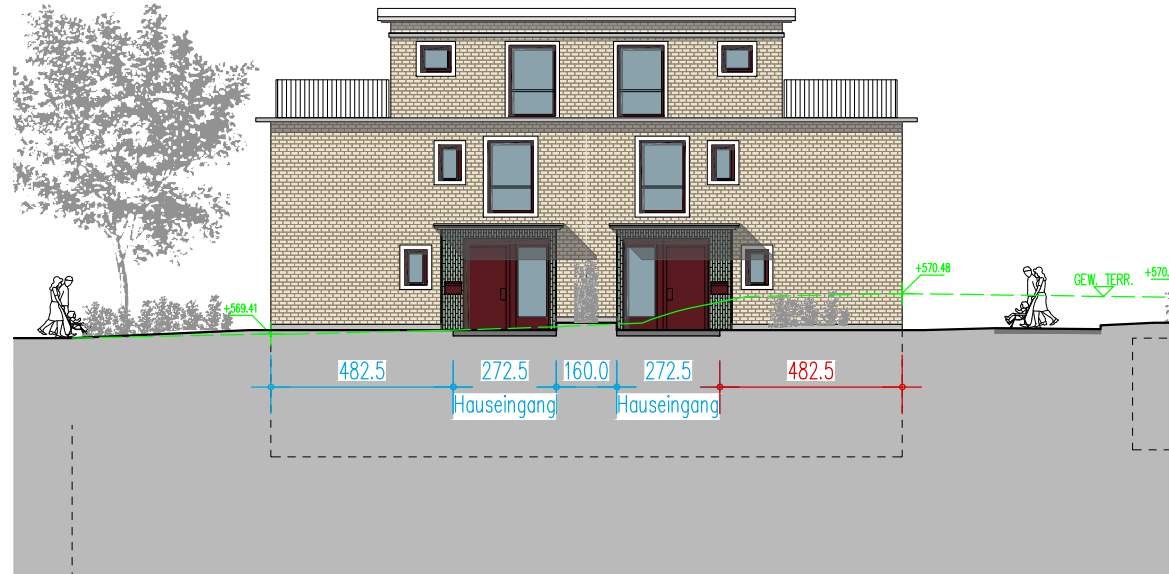
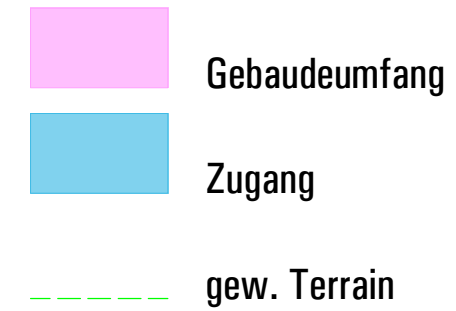
1:200

1266-200-701

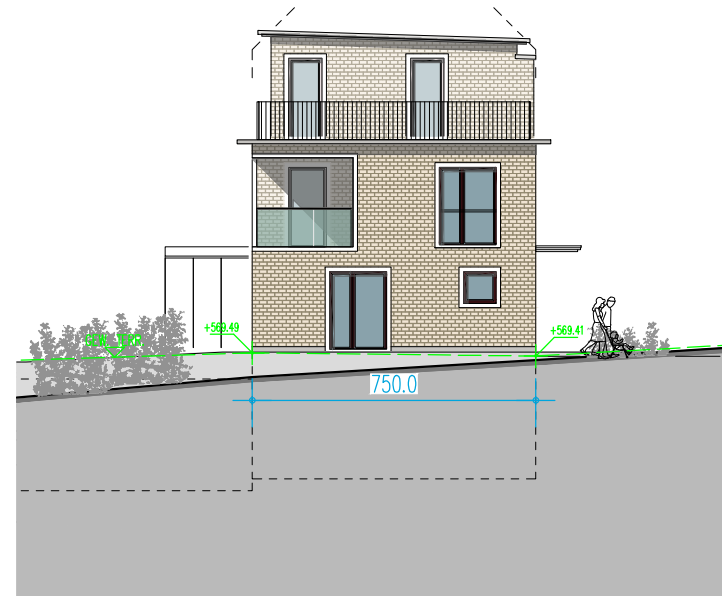
Format: A3q



Grundriss EG



Nordfassade

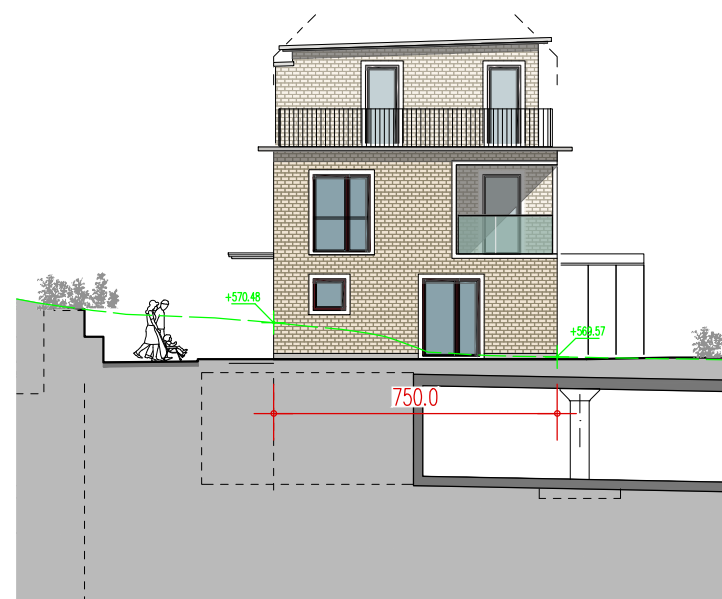


Ostfassade

		Haus A	
Gebäudeumfang:	$2 \times (16.70 + 7.50) =$	48.40	m
Zulässiger Umfang Abgrabung:	$48.4 / 2 =$	24.20	m
Abgrabungen Projekt:	$2 \times 2.725 + 4.825 + 11.875 + 7.50 =$	29.65	m
davon Zugänge:	$=$	5.45	m
Total:	$29.65 - 5.45 =$	24.20	m
Reserve:	$24.2 - 24.2 =$	0.00	m



Sudfassade



Westfassade